

PROOF COVER SHEET

Journal acronym: PCNS
Author(s): Chenbo Wang, Yina Ma and Shihui Han
Article title: Self-construal priming modulates pain perception: Event-related potential evidence
Article no: 797388
Enclosures: 1) Query sheet
2) Article proofs

Dear Author,

1. Please check these proofs carefully. It is the responsibility of the corresponding author to check these and approve or amend them. A second proof is not normally provided. Taylor & Francis cannot be held responsible for uncorrected errors, even if introduced during the production process. Once your corrections have been added to the article, it will be considered ready for publication.

Please limit changes at this stage to the correction of errors. You should not make insignificant changes, improve prose style, add new material, or delete existing material at this stage. Making a large number of small, non-essential corrections can lead to errors being introduced. We therefore reserve the right not to make such corrections.

For detailed guidance on how to check your proofs, please see
<http://journalauthors.tandf.co.uk/production/checkingproofs.asp>.

2. Please review the table of contributors below and confirm that the first and last names are structured correctly and that the authors are listed in the correct order of contribution. This check is to ensure that your name will appear correctly online and when the article is indexed.

Sequence	Prefix	Given name(s)	Surname	Suffix
1		Chenbo	Wang	
2		Yina	Ma	
3		Shihui	Han	

Queries are marked in the margins of the proofs.

AUTHOR QUERIES

General query: You have warranted that you have secured the necessary written permission from the appropriate copyright owner for the reproduction of any text, illustration, or other material in your article. (Please see <http://journalauthors.tandf.co.uk/preparation/permission.asp>.) Please check that any required acknowledgements have been included to reflect this.

- AQ1** Sui et al., in press: please provide any updated publication details if available
- AQ2** Frot, Magnin, Mauguière & García-Larrea, in press: please provide any updated publication details if available
- AQ3** Jiang, Varnum, Hou & Han, under review: Please clarify use of term ‘under review’; is this work that is a ‘manuscript in preparation’, ‘submitted for publication’ or an ‘unpublished manuscript’ as per the journal style guidelines? Please also supply the date of the draft or the expected year of publication date
- AQ4** Wang et al., in press: please provide any updated publication details if available
- AQ5** Ma et al., in press: please provide any updated publication details if available
- AQ6** Bromm, B., & Chen, A. C. (1995): Please provide volume’s issue number
- AQ7** Chiao et al. (2009): Please provide volume’s issue number
- AQ8** Crawford et al. (1997): Please provide volume’s issue number
- AQ9** DS7A Digitimer: Please provide year of apparatus’ launch
- AQ10** Eimer M., & Forster, B. (2003): Please provide volume’s issue number
- AQ11** Frot et al. (1999): In line with journal guidelines regarding issue numbers, numbers should only be included if the page numbering of each issue begins at 1 – please confirm if this is the case with this journal and supply missing details
- AQ12** Kanda et al. (1996): In line with journal guidelines regarding issue numbers, numbers should only be included if the page numbering of each issue begins at 1 – please confirm if this is the case with this journal and supply missing details
- AQ13** Lin, Z., Lin, Y., & Han, S. (2008): Please provide volume’s issue number
- AQ14** Ng et al. (2010): Please provide volume’s issue number
- AQ15** Oyserman, D. (2011): In line with journal guidelines regarding issue numbers, numbers should only be included if the page numbering of each issue begins at 1 – please confirm if this is the case with this journal and supply missing details
- AQ16** Zaslansky et al. (1996): Please provide volume’s issue number

How to make corrections to your proofs using Adobe Acrobat

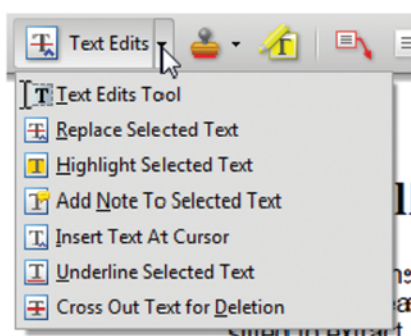
Taylor & Francis now offer you a choice of options to help you make corrections to your proofs. Your PDF proof file has been enabled so that you can edit the proof directly using Adobe Acrobat. This is the simplest and best way for you to ensure that your corrections will be incorporated. If you wish to do this, please follow these instructions:

1. Save the file to your hard disk.
2. Check which version of Adobe Acrobat you have on your computer. You can do this by clicking on the "Help" tab, and then "About."

If Adobe Reader is not installed, you can get the latest version free from <http://get.adobe.com/reader/>.

- If you have Adobe Reader 8 (or a later version), go to "Tools" / "Comments & Markup" / "Show Comments & Markup."
- If you have Acrobat Professional 7, go to "Tools" / "Commenting" / "Show Commenting Toolbar."

3. Click "Text Edits." You can then select any text and delete it, replace it, or insert new text as you need to. If you need to include new sections of text, it is also possible to add a comment to the proofs. To do this, use the Sticky Note tool in the task bar. Please also see our FAQs here: <http://journalauthors.tandf.co.uk/production/index.asp>.



4. Make sure that you save the file when you close the document before uploading it to CATS using the "Upload File" button on the online correction form. A full list of the comments and edits you have made can be viewed by clicking on the "Comments" tab in the bottom left-hand corner of the PDF.

If you prefer, you can make your corrections using the CATS online correction form.

Self-construal priming modulates pain perception: Event-related potential evidence

Chenbo Wang, Yina Ma, and Shihui Han

Department of Psychology, PKU-IDG/McGovern Institute for Brain Research, Peking University, Beijing, P. R. China

5

We investigated whether and how temporary shifts in self-construals modulates neural correlates of pain perception. Event-related potentials (ERPs) to painful and non-painful electrical stimulations were recorded from adults after being primed with independent and interdependent self-construals. Electrical stimulations to the left hand elicited two negative components (N60 and N130) over the frontal /central regions and two positive components (P90 and P300) over the central/parietal regions with larger amplitudes over the right rather than the left hemispheres. Painful vs. non-painful stimulations enlarged P90, N130, and P300 amplitudes. Independent vs. interdependent self-construal priming induced larger N130 amplitudes to painful stimulations but did not affect the N130 amplitudes to non-painful stimulations. The self-construal priming effect on the P300 amplitudes to painful stimulation positively correlated with self-reported interdependence. Our ERP results suggest that temporary shifts in self-construals affect pain perception by modulating the neural activities engaged in early somatosensory and late evaluation processing of physical pain.

10

15

Keywords: Pain; Self-construal priming; ERP; N130; P300.

People hold different cultural views about the self that emphasize either autonomy and independence (an independent self-construal) in Western societies or connections between oneself and others and interdependence in Eastern Asian societies (an interdependent self-construal) (Markus & Kitayama, 1991). Recent brain imaging studies have shown that temporary shifts of self-construals can influence multiple neurocognitive processes in the human brain. An early functional magnet resonance imaging (fMRI) study showed that the right frontal activity engaged in self-face recognition was enhanced by self-construal priming that emphasize independent vs. interdependent self-construals in Chinese (Sui & Han, 2007). A following event-related potential (ERP) study showed that self-

20

25

30

construal priming modulated the frontal activity underlying recognition of faces of oneself or a close other (Sui et al., *in press*). Other fMRI research found that priming independent vs. interdependent self-construals modulated the medial prefrontal activity involved in reflection of personality traits of a close other (Harada, Li, & Chiao, 2010). Self-construal priming also modulates perceptual or motor activity in the human brain. Lin, Lin, and Han (2008) found that priming independent vs. interdependent self-construals increased the occipital activity underlying perception of local properties of hierarchical visual stimuli. Recent transcranial magnetic stimulation (TMS) research reported that priming interdependent self-construal enhanced motor cortical output during an action observation task (Obhi,

35

AQ1

40

45

Correspondence should be addressed to: Shihui Han Prof. Ph. D., Department of Psychology, Peking University, 5 Yiheyuan Road, Beijing 100871, P. R. China. E-mail: shan@pku.edu.cn

This work was supported by the National Natural Science Foundation of China (Project 30910103901, 91024032, 81161120539) and the National Basic Research Program of China (973 Program 2010CB833903).

Hogeveen, & Pascual-Leone, 2011). These findings suggest that temporary shifts in self-construals modulate neural activities underlying perceptual, social cognitive, and motor processing in the human brain.

The current work further investigated whether and how self-construal priming modulates neural correlates of pain perception that involves somatosensory processing and negative affect. It is well known that a cortical circuit consisting of the primary (SI) and second (SII) somatosensory cortex, anterior cingulate (ACC), insula, and supplementary motor area (SMA) is engaged in physical pain (Peyron, Laurent, & García-Larrea, 2000). Specifically related to the current work, fMRI research revealed that painful electrical stimulations applied to body parts significantly activated the SI/SII, ACC, and insula (see Apkarian, Bushnell, Treede, & Zubieta, 2005 for review). The results of ERP studies that recorded electroencephalography (EEG) from electrodes over the scalp suggest that the early neural activities to painful stimulations (e.g., the N60 at 20–90ms and N130 at 100–160ms) arise from the contralateral SI/SII and are related to early somatosensory processing of physical pain, whereas the long-latency activity to painful stimulations might arise from the ACC (Bromm & Chen, 1995; Christmann, Koeppel, Braus, Ruf, & Flor, 2007; Tarkka & Treede, 1993) and is related to affective processing of physical pain. A study using intracortical recordings further identified that nociceptive laser stimuli applied to the dorsum of the hand produced evoked potentials that peaked between 120ms and 190ms over the SI and between 200ms and 330ms over the insula (Frot, Magnin, Mauguière & García-Larrea, in press). Both the early somatosensory component (e.g., the N80 and N140, Eimer & Forster, 2003) and the long-latency component (e.g., the P300) that mediates cognitive evaluation of painful stimulations (Zaslansky, Sprecher, Tenke, Hemli, & Yarnitsky, 1996) are modulated by attention.

Because priming independent compared to interdependent self-construals may facilitate self-focused attention, according to Markus and Kitayama (1991), it is likely that independent vs. interdependent self-construal priming may enhance the neural activity to painful stimulations. Moreover, as chronic views of the self constrain the effect of self-construal priming on neural activity underlying self-recognition (Sui et al., in press), the effect of self-construal priming on neural correlates of physical pain may also vary as a function of subjects' chronic self-construals. We tested these hypotheses by recording EEG to painful and non-painful electrical stimulations from adults after they had been primed with independent and interdependent self-construals. ERPs that were characterized with high

time resolution were then extracted so that we were able to examine whether the early somatosensory processing and the late evaluative processing of physical pain were similarly modulated by self-construal priming. We were particularly interested in whether self-construal priming modulates ERPs to painful and non-painful stimulations in a similar vein. Chronic self-construals were estimated using the self-construal scale (SCS, Singelis, 1994) so as to assess whether the effect of temporal shifts in self-construal varies across individuals with different chronic self-construals.

METHODS

Subjects

Twenty-eight healthy male college students participated in this study as paid volunteers. Four subjects were excluded from data analysis due to excessive eye blinks or head movements during EEG recording. The final sample for data analysis included 24 subjects aged between 19 and 30 years (Mean \pm SD = 22.7 \pm 3.0). All subjects were right-handed and self-reported no chronic diseases and neurological history. This study was approved by a local ethics committee at the Department of Psychology, Peking University. Written informed consent was obtained prior to the study.

Priming materials

Four essays were printed on separate sheets for priming independence and interdependence, similar to Gardner, Gabriel, and Lee (1999). These essays described sea-shore or shopping tours. Two essays contained singular pronouns (e.g., "I", "me", "my") to prime independent self-construal and two essays contained plural pronouns (e.g., "we", "us", "our") to prime interdependent self-construal. Each essay contained 11–12 pronouns. During self-construal priming, participants were instructed to read each essay and circle all the pronouns in each essay.

Electrical stimulation

Electrical stimulation was a single 0.5ms pulse with a square waveform and was delivered to the dorsum of the left hand via a pair of foil electrodes (DS7A

Digitimer). Before EEG recording, sensory and pain tolerance thresholds were determined individually using the ascending limit method (Niddam et al., 2002; Wager et al., 2004). A stimulation of 0.8mA was applied first. Current intensity was then increased by 0.2mA each time while subjects reported their feelings. The sensory threshold was defined as the current intensity with which subjects for the first time answered “yes” to the question “can you feel this shock?” (0.80mA to 1.80mA, mean = 1.28mA). The pain tolerance threshold was defined as the current intensity with which subjects for the first time answered “no” to the question “Can you tolerate a stronger shock?” (2.40mA to 9.20mA, mean = 4.02mA). The current intensities of sensory and tolerance thresholds were used as “non-painful” and “painful” stimulation during EEG recording.

Procedure

Each participant underwent four sessions of electrical stimulations with simultaneous EEG recording. Before each session, participants were primed with either independent or interdependent self-construals by reading an essay in three minutes. The first two sessions were assigned to one priming condition and the last two sessions to another priming condition. The order of independent or interdependent self-construal priming was counterbalanced across subjects.

Each session consisted of 24 trials of electrical stimulations. Twelve painful and 12 non-painful stimulations were given in a pseudorandom order. Each trial started with the presentation of a square of 1500ms at the center of a monitor, which was followed by a 1500ms fixation. The square reminded subjects of upcoming stimulations in order to avoid surprise-induced head movements. Subjects were asked not to blink by looking at the fixation. A 0.5ms electrical stimulation was then delivered to the left hand. After 2000ms, subjects were asked to rate their painful feelings within 4000ms on a 10-point visual analogue scale (VAS) by scrolling a bar to indicate rating scores of painful feelings (0 = *no sensation*, 1 = *feel something but not pain*, 4 = *slight pain*, 8 = *strong pain*, 10 = *worst imaginable pain*). The mean interval between two successive trials varied randomly between 1000ms and 3000ms.

To assess the extent of endorsement of self-construal cultural values, before the EEG session, subjects completed the SCS (Singelis, 1994) with a seven-point

Likert scale (1 = *strongly disagree*, 7 = *strongly agree*). Twelve items of the SCS estimate independence and 12 items estimate interdependence.

EEG recordings and data analysis

EEG was recorded from 62 Ag-AgCl electrodes mounted on an elastic cap in accordance with the extended 10–20 system. The linked left and right mastoids served as a reference for EEG recording. To monitor eye movement, both horizontal (HEOG) and vertical (VEOG) electro-oculograms were also recorded from electrodes placed 1.5cm lateral to the left and right external canthi and electrodes placed above and below the left eye. The impedance of all electrodes was kept less than 5 k Ω . The EEG data were sampled at 500Hz and filtered with a band pass of 0.05~100Hz. Evoked potentials were extracted with an epoch 200ms before the onset of an electrical stimulation and lasting for 1000ms. To obtain grand average ERPs for each individual, we first removed the artifact at the stimulus onset caused by the electric stimulator, similar to Zaslansky et al. (1996), and improved the signal at 0~20ms around the stimulation by cubic spline interpolation, similar to Christmann et al. (2007). We then excluded trials with potentials exceeding $\pm 50\mu\text{V}$ over either HEOG or VEOG electrodes. This resulted in acceptance of 83.3% of trials. Finally, EEG was offline filtered with a band pass of 0.1~40Hz and 24dB and detrended. The baseline of each epoch was corrected in reference to potentials prior to the onset of electrical stimulation before a grand average was conducted.

Electrodes were clustered into the frontal (AF4-AF3, F6-F5, F4-F3, FZ), frontal-central (FC4-FC3, FC2-FC1, FCZ), central (C6-C5, C4-C3, C2-C1, CZ), central-parietal (CP6-CP5, CP4-CP3, CP2-CP1, CPZ), and parietal (P4-P3, P2-P1, PZ) areas. We extracted the mean amplitude for the N60 (50–80ms) and the N130 (120–140ms) from each electrode over the frontal/central areas and for the P90 (80–100ms) and the P300 (240–320ms) from each electrode over the central/parietal areas. We conducted a repeated analysis of variance (ANOVA) of ERP amplitudes with Priming (independence vs. interdependence), Stimulus Intensity (painful vs. non-painful stimuli), and Hemisphere (electrodes over the left vs. right hemispheres) as independent within-subjects variables. *Post-hoc* analyses were conducted to examine the priming effects on ERPs elicited by painful and non-painful stimulation, respectively.

RESULTS

Behavioral performance

245 The mean rating scores ($\pm SD$) of painful feelings were $7.69 \pm .74$ for painful stimulations and $1.44 \pm .56$ for non-painful stimulations in the independent self-construal priming condition and $7.77 \pm .73$ for painful stimulations and $1.41 \pm .61$ for non-painful stimulations in the interdependent self-construal priming condition. The rating scores of painful (or non-painful) stimulation did not differ significantly between the two priming conditions ($ps > .1$). The rating score of independence varied between 3.58 and 6.08 (Mean $\pm SD = 4.86 \pm .72$) and the rating score of interdependence varied between 3.67 and 6.58 (Mean $\pm SD = 5.13 \pm .68$) across the final sample of 24 participants.

Electrophysiological data

Figure 1a illustrates grand average ERPs elicited by electrical stimulations. These were characterized by two successive negative components, i.e., the N60 at 50–80ms and N130 at 120–140ms, over the lateral frontal/central electrodes. There was also a positive component at 80–100ms over the central/parietal electrodes (P90), followed by a long-latency positive component at 200–400ms with the maximum amplitude over the central region (P300).

Relative to non-painful stimulation, painful stimulation elicited significantly larger P90 amplitudes over the right centroparietal electrodes ($F(1, 23) = 5.668-20.22, p < .05$), larger N130 amplitudes over the bilateral frontocentral electrodes ($F(1, 23) = 5.26-44.83, p < .05$), and larger P300 over the centroparietal electrodes ($F(1, 23) = 19.04-63.42, p < .001$).

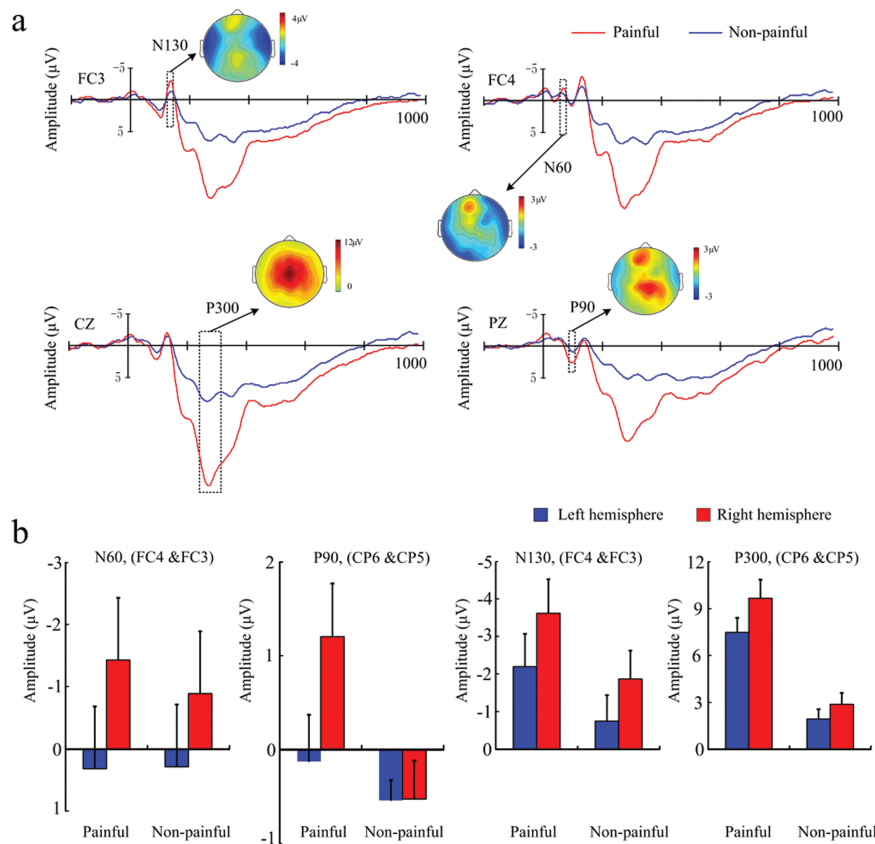


Figure 1. (a) Illustration of grand-average ERPs elicited by electrical painful and non-painful stimulations at electrodes FC4, FC3, PZ, and CZ, where each ERP component showed the maximum amplitude. (b) Illustration of the contralaterality of ERPs to painful stimulations at electrodes FC4 vs. FC3 and CP6 vs. CP5. The ERP amplitudes were larger over the right hemisphere contralateral to the left hand receiving painful stimulations.

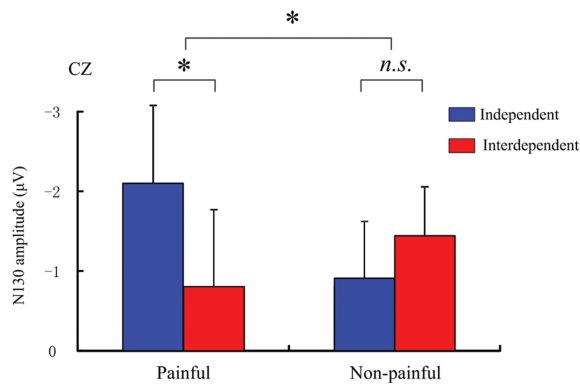


Figure 2. Illustration of the effect self-construal priming on the N130 amplitudes at electrode CZ. Error bars represent standard errors. *, $p < .05$; *n.s.*, not significant.

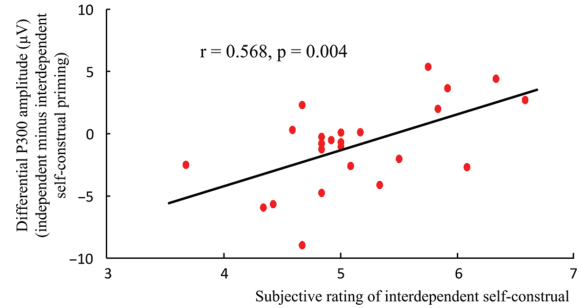


Figure 3. The correlation between subjective ratings of interdependent self-construals and the differential P300 amplitude elicited by painful stimulation after independent vs. interdependent self-construal priming at electrode CZ.

275 Because electrical stimulations were delivered to
 the left hand, we expected larger amplitudes of evoked
 potentials over the right rather than left hemispheres.
 This was confirmed by significant effects of Hemisphere on the amplitudes of the N60 ($F(1, 23) =$
 280 $11.08-39.40, p < .005$) and N130 over the frontocentral
 electrodes ($F(1, 23) = 8.501-15.78, p < .01$), and of
 the P90 ($F(1, 23) = 6.226-8.281, p < .05$) and P300 (F
 (1, 23) = $11.39-17.17, p < .005$) over the centroparietal
 electrodes (see Figure 1b).

285 Most interestingly, ANOVAs of the N130 amplitudes
 showed a significant interaction of Priming \times
 Stimulus Intensity over the centroparietal electrodes (F
 (1, 23) = $4.48-9.58, ps < .05$). Post-hoc analyses
 confirmed that independent vs. interdependent self-
 290 construal priming resulted in larger N130 amplitudes
 to painful stimulations over the centroparietal electro-
 des ($t = 2.37-2.69, ps < .05$), whereas the N130
 amplitudes to non-painful stimulation did not differ
 significantly between the two priming conditions
 295 ($ps > .05$, see Figure 2).

ANOVAs of the P300 amplitudes did not show a
 significant effect of self-construal priming ($ps > .05$).
 Thus we further examined the priming effect on the
 P300 amplitudes by including self-reported interde-
 300 pendent self-construals as a covariant in order to control
 the influences by subjects' chronic self-construals.
 This analysis showed a significant effect of self-construal
 priming on the P300 amplitudes to painful stimulation
 over the centroparietal electrodes ($F(1,23) = 4.85-15.68, p < .05$).
 305 To further explore the relationship between individual differences
 in self-construals and the priming effect on the P300
 amplitudes, we calculated differential P300 amplitudes
 by subtracting the P300 amplitudes to painful
 310 stimulation in the interdependent self-construal priming
 condition from that in the independent self-

construal priming condition. We then conducted a
 regression analysis and found a significant positive
 correlation between the differential P300 amplitude
 and rating scores of interdependent self-construals
 315 over the centroparietal electrodes ($r = .406-.622, p$
 $= .001-.050$, see Figure 3). It appears that the inde-
 pendent relative to interdependent self-construal
 priming increased the P300 amplitude in those with
 high interdependence but decreased the P300 ampli-
 320 tude in those with low interdependence.

DISCUSSION

Similar to the previous studies that recorded
 somatosensory-evoked potentials (Bromm & Chen,
 1995; Christmann et al., 2007; Tarkka & Treede,
 1993), we found that electrical stimulations applied to
 325 subjects' left hands elicited an early N60-P90-N130
 complex over the frontal/central/parietal electrodes.
 The activities showed greater amplitudes over the elec-
 trodes contralateral to the stimulated hand. Moreover,
 330 electrical painful compared to non-painful stimulations
 significantly increased the P90 amplitudes over the
 right centroparietal electrodes. The P90 possibly
 arose from the right SI given its peak latency and
 contralaterality of the amplitude. Electrical painful
 335 compared to non-painful stimulations also increased
 the N130 amplitudes over the bilateral frontocentral
 electrodes. Frot, Rambaud, Guénot, and Mauguière
 (1999) found that CO₂-laser stimulation of the skin at
 340 the dorsum of one hand elicited a negative activity that
 peaked around 135ms post stimulation and was local-
 ized to the bilateral SII. Thus the N130 observed in our
 work possibly had sources in the bilateral SII.

Interestingly, we found that, while self-construal
 priming did not influence the P90 amplitudes to
 345

painful stimulations, independent compared to interdependent self-construal priming significantly increased the N130 amplitudes. The priming effect on the N130 amplitudes was specific to painful stimulations because the N130 amplitudes to non-painful stimulations were not affected by self-construal priming. This result supports our hypothesis that independent compared to interdependent self-construal priming facilitates self-focus attention and thus enhances neural responses to painful stimulations applied to the self. The previous studies of self-construal priming have shown that priming independent or interdependent self-construals modulate perceptual processing in the occipital cortex (Lin et al., 2008), self-face recognition in the lateral frontal cortex (Sui & Han, 2007), reflection of personality traits in the medial prefrontal cortex (Harada et al., 2010), and motor resonance in the motor cortex (Obhi et al., 2011). Our findings complement the previous research by showing the first evidence that independent vs. interdependent self-construal priming enhances the somatosensory processing (possibly in the SII).

The effect of self-construal priming on the P300 amplitudes seemed to depend on subjects' chronic self-construals. We found a significant effect of self-construal priming on the P300 amplitudes to painful stimulation only when controlling subjects' chronic self-construals. The regression analysis further uncovered that independent self-construal priming produced opposite effects on P300 amplitudes in subjects of high or low interdependence in self-construals. The independent relative to interdependent self-construal priming increased the P300 amplitude in those with high interdependence but decreased the P300 amplitude in those with low interdependence. The P300 for the pain modality is related to cognitive evaluation of painful stimulations and is modulated when attention is focused on or distracted from pain stimulations (Crawford et al., 1997; Kanda et al., 1996; Zaslansky et al., 1996). Our results indicate that how independent self-construal priming modulates the cognitive process of physical pain is constrained by subjects' chronic cultural values of self-construals. Temporary shifts in self-construals against one's chronic self-construal (e.g., interdependence) enhanced late evaluation processes of painful stimulations. Our recent study that examined the effect of self-construal priming on neural responses to perceived pain in others found that reinforcing interdependent self-construal in Chinese decreased the neural activity to perceived pain in unknown others whereas priming independent self-construal produced little effect on empathic neural responses (Jiang, Varnum, Hou & Han, under review).

Thus it is likely that priming independent and interdependent self-construals in Chinese may respectively influence neural activities in response to one's own pain and pain in others.

Together with previous brain imaging studies of self-construal priming, our work raised an interesting question, i.e., How does self-construal priming modulate brain activity involved in cognitive/emotional processing? Our recent fMRI study that investigated the effect of self-construal priming on the resting state brain activity found that self-construal priming changed the activity of default mode network in the resting-state, with more involvement of dorsal medial prefrontal cortex after interdependent self-construal priming (Wang et al., *in press*). It is thus perhaps speculated that self-construal priming may first change the resting state activity in the cortical midline structure, which may in turn modulate other brain regions engaged in multiple cognitive/emotional processing. This, however, should be tested in future research.

In sum, the results that self-construal priming modulates neural activities underlying multiple cognitive/emotional processing are consistent with other observations that cultural priming affects the medial prefrontal activity involved in reflection of one's own personality traits (Chiao et al., 2010; Ng, Han, Mao, & Lai, 2010). These findings extend our understanding of how the plastic nature of the human brain helps people to fit into specific sociocultural environments. Behavioral studies indicate that self-construal priming can make either independence or interdependence accessible and provide a situated cognition framework to make sense of the task at hand (Kühnen & Oyserman, 2002; Lin & Han, 2009; Oyserman, 2002; Lin & Han, 2009; Oyserman, 2011). Brain imaging studies further uncover that both long-term sociocultural experiences (e.g., Ma et al., *in press*; Zhu, Zhang, Fan, & Han, 2007;) and temporary cultural priming shape dynamic functional organization of the human brain so that the brain may function efficiently in response to a variety of tasks in different sociocultural contexts (Han & Northoff, 2008; Han et al., 2013). Self-construal not only provides a framework to define the self and its relationship with others but also influences neural activities involved in multiple cognitive/emotional processing such as pain perception.

REFERENCES

- Apkarian, A. V., Bushnell, M. C., Treede, R. D., & Zubieta, J. K. (2005). Human brain mechanisms of pain perception and regulation in health and disease. *European Journal of Pain*, 9, 463–484.

- Bromm, B., & Chen, A. C. (1995). Brain electrical source analysis of laser evoked potentials in response to painful trigeminal nerve stimulation. *Electroencephalography of Clinical Neurophysiology*, *95*, 14–26.
- 455 Chiao, J. Y., Harada, T., Komeda, H., Li, Z., Mano, Y., Saito, D., . . . Iidaka, T. (2009). Dynamic cultural influences on neural representations of the self. *Journal of Cognitive Neuroscience*, *22*, 1–11.
- AQ6  AQ7
- 460 Christmann, C., Koeppel, C., Braus, D., Ruf, M., & Flora, H. (2007). A simultaneous EEG–fMRI study of painful electrical stimulation. *NeuroImage*, *34*, 1428–1437.
- Crawford, H. J., Knebel, T., Pribram, K. H., Kaplan, L., Vendemia, J. M. C., Min, X., & L’Hommedieu, C. (1997). Somatosensory event-related potentials and allocation of attention to pain: Effects of hypnotic analgesia as moderated by hypnotizability level. *International Journal of Psychophysiology*, *25*, 72–73.
- AQ8 DS7A Digital High Voltage Stimulator [Apparatus]. (2009). Welwyn Garden City, UK: Digitimer Ltd.
- AQ9 470 Eimer M., & Forster, B. (2003). Modulations of early somatosensory ERP components by transient and sustained spatial attention. *Experimental Brain Research*, *151*, 24–31.
- AQ10 475 Frot, M., Rambaud, L., Guénot, M., & Mauguière, F. (1999). Intracortical recordings of early pain-related CO₂-laser evoked potentials in the human second somatosensory (SII) area. *Clinical Neurophysiology*, *110*, 133–145.
- AQ11 480 Frot, M., Magnin, M., Mauguière, F., & García-Larrea, L. (in press). Cortical representation of pain in primary sensory-motor areas (S1/M1) – A study using intracortical recordings in humans. *Human Brain Mapping*.
- AQ2 485 Gardner, W. L., Gabriel, S., & Lee, A. Y. (1999). “I” value freedom, but “we” value relationships: Self-construal priming mirrors cultural differences in judgment. *Psychological Science*, *10*, 321–326.
- Han, S., & Northoff, G. (2008). Culture-sensitive neural substrates of human cognition: A transcultural neuroimaging approach. *Nature Reviews Neuroscience*, *9*, 646–654.
- 490 Han, S., Northoff, G., Vogeley, K., Wexler, B. E., Kitayama, S., & Varnum, M. E. W. (2013). A cultural neuroscience approach to the biosocial nature of the human brain. *Annual Review of Psychology*, *64*, 335–359.
- 495 Harada, T., Li, Z., & Chiao, J. Y. (2010). Differential dorsal and ventral medial prefrontal representations of the implicit self modulated by individualism and collectivism: An fMRI study. *Social Neuroscience*, *5*, 257–271.
- AQ3 500 Jiang, C., Varnum, M., Hou, Y., & Han, S. (2013). Enhancing culturally congruent self-construals decreases empathic neural responses. ~~under review~~.
- Kanda, M., Fujiwara, N., Xu, X., Shindo, K., Nagamine, T., Ikeda, A., & Shibasaki, H. (1996). Pain-related and cognitive components of somatosensory evoked potentials following CO₂ laser stimulation in man. *Electroencephalography and Clinical Neurophysiology*, *100*, 105–114.
- AQ12 510 Kühnen, U., & Oyserman, D. (2002). Thinking about the self influences thinking in general: Cognitive consequences of salient self-concept. *Journal of Experimental Social Psychology*, *38*, 492–499.
- Lin, Z., & Han, S. (2009). Self-construal priming modulates the scope of visual attention. *Quarterly Journal of Experimental Psychology, Section A*, *62*, 802–813.
- 515 Lin, Z., Lin, Y., & Han, S. (2008). Self-construal priming modulates visual activity underlying global/local perception. *Biological Psychology*, *77*, 93–97. AQ13
- Ma, Y., Bang, D., Wang, C., Allen, M., Frith, C., Roepstorff, A., & Han, S. (in press). Sociocultural patterning of neural activity during self-reflection. *Social Cognitive and Affective Neuroscience*. 520
- AQ5 Markus, H. R., & Kitayama, S. (1991). Culture and the self – Implications for cognition, emotion, and motivation. *Psychological Review*, *98*, 224–253.
- 525 Ng, S. H., Han, S., Mao, L., & Lai, J. C. L. (2010). Dynamic bicultural brains: An fMRI study of their flexible neural representation of self and significant others in response to culture priming. *Asian Journal of Social Psychology*, *13*, 83–91. AQ14
- 530 Niddam, D., Yeh, T., Wu, Y., Lee, P., Ho, L., Arendt-Nielsen, L., . . . Hsieh, J. (2002). Event-related functional MRI study on central representation of acute muscle pain induced by electrical stimulation. *NeuroImage*, *17*, 1437–1450.
- 535 Obhi, S. S., Hogeveen, J., & Pascual-Leone, A. (2011). Resonating with others: The effects of self-construal type on motor cortical output. *Journal of Neuroscience*, *31*, 14531–14535.
- Oyserman, D. (2011). Culture as situated cognition: Cultural mindsets, cultural fluency, and meaning making. *European Review of Social Psychology*, *22*, 164–214. AQ15
- 540 Peyron, R., Laurent, B., & García-Larrea, L. (2000). Functional imaging of brain responses to pain. A review and meta-analysis (2000). *Neurophysiologie Clinique*, *30*, 263–288.
- 545 Singelis, T. M. (1994). The measurement of independent and interdependent self-construals. *Personality and Social Psychology Bulletin*, *20*, 580–591.
- 550 Sui, J., & Han, S. (2007). Self-construal priming modulates neural substrates of self-awareness. *Psychological Science*, *18*, 861–866.
- 555 Sui, J., Hong, Y., Liu, C. H., Humphreys, G. W., & Han, S. (in press). Dynamic cultural modulation of neural responses to one’s own and friend’s faces. *Social Cognitive and Affective Neuroscience*. AQ1
- Tarkka, I. M., & Treede, R. D. (1993). Equivalent electrical source analysis of pain-related somatosensory evoked potentials elicited by a CO₂ laser. *Journal of Clinical Neurophysiology*, *10*, 513–519.
- 560 Wager, T., Rilling, J., Smith, E., Sokolik, A., Casey, K., Davidson, R., . . . Cohen, J. (2004). Placebo-induced changes in fMRI in the anticipation and experience of pain. *Science*, *303*, 1162–1167. AQ4
- 565 Wang C., Oyserman D., Liu Q., Li H., & Han, S. (in press). Accessible cultural mindset modulates the default mode activity: Evidence for the culturally situated brain. *Social neuroscience*.
- Zaslansky, R., Sprecher, E., Tenke, C., Hemli, J., & Yarnitsky, D. (1996). The P300 in pain evoked potentials. *Pain*, *66*, 39–49. AQ16
- 570 Zhu, Y., Zhang, L., Fan, J., & Han, S. (2007). Neural basis of cultural influence on self-representation. *NeuroImage*, *34*, 1310–1316.